



# Camtraptions Jungle Mounts Manual

---



<b>Jungle Mounts Tripod .....</b>	<b>2</b>
Parts List .....	2
Before You Begin .....	2
Attaching the Quick Release Clamp.....	3
Attaching your Camera.....	3
Set-up Tips .....	4
<b>Jungle Mounts Tree Pod .....</b>	<b>5</b>
Parts List .....	5
Before you Begin .....	5
Attaching the Ratchet Straps.....	5
Removing the Tree Pod .....	8
Adjusting the Pan-Tilt Head .....	9
<b>Jungle Mounts Combo Kit .....</b>	<b>9</b>
Parts List .....	9
Tripod to Tree Pod Conversion.....	10
Tree Pod to Tripod Conversion.....	14
<b>Pan-Tilt Head .....</b>	<b>19</b>
Attaching the Pan-Tilt Head to a Jungle Mounts Tripod.....	19
Adjusting the Position .....	20
<b>Arm-Extension .....</b>	<b>21</b>
Attaching the Arm Extension.....	21
<b>Leg Extension.....</b>	<b>21</b>
<b>Support .....</b>	<b>22</b>

# Jungle Mounts Tripod

## Parts List

- Quick Release Clamp and 40mm Square Quick Release Plate
- Jungle Mounts Tripod
- 4mm Hex Key
- 3/16 inch Hex Key

## Before You Begin

No equipment should be mounted onto the Jungle Mounts Tripod before it has been secured in the intended position, with all of the bolts fully tightened. The bolts on the tripod are tightened by turning them clockwise using the supplied 4mm hex key. Then, after mounting your equipment, small adjustments can be made to each part of the tripod by slightly loosening the relevant bolts.

Before you adjust the positions of any of the joints, you should ensure that the relevant bolts are sufficiently loosened. If the bolts are still tight and you try to force the joint, then the black coating on the metal surface may become scratched.

You should use one hand to support your equipment before loosening any bolts on the top mounting bracket. Once the tilt angle has been adjusted and the bolts fully tightened again, then you can let go.

Most joints are secured with two bolts; one that the joint pivots around and one that the joint slide through. It is more important the sliding bolts are firmly tightened to stop joints from moving.

## Attaching the Quick Release Clamp

The quick release clamp and 40mm square plate come packaged in a separate cardboard box alongside the Jungle Mounts Tripod. To install the quick release clamp, first remove the two cap head screws from the top mounting bracket of the tripod using the larger 3/16 inch hex key that was supplied with your tripod.

Secure the quick release clamp on top of the mounting plate using the two cap head screws. Tighten the screws in place using the 3/16 inch hex key. You may need to remove the 40mm square plate from the quick release clamp to be able to insert and tighten the cap head screws. Use the locking knob on the side of the quick release clamp to remove the 40mm plate.



## Attaching your Camera

First, attach the 40mm quick release plate to the bottom of your equipment (e.g. camera or protective camera housing). For the strongest grip, the quick release plate can be tightened using a coin or Philips head screwdriver.



Fully loosen the locking knob on the quick release clamp.

Insert the quick release plate into the clamp. Make sure that the quick release plate is fully engaged inside the clamp before tightening it.

Tighten the locking knob to clamp the quick release plate securely in place.



## Set-up Tips

- Try to make sure that the horizontal tilt of your tripod is level before attaching your equipment. The horizontal tilt can be adjusted by lowering or heightening the legs. The vertical tilt can also be adjusted using the bolts on the top mounting bracket.
- For the strongest possible set up, you can use up to six tent pegs to secure the tripod to the ground. This is particularly recommended if the tripod is being used in a high position and the legs are not spread apart for a wide footprint. The tent pegs should have a diameter of 6mm or less to fit through the holes.
- Once the tripod has been set up and your equipment has been attached, you should do a final check of all the bolts on the tripod to make sure that they are tightened.
- The top mounting bracket of the tripod has been attached in the orientation that allows for the most normal range of vertical tilt. If you need to tilt the camera beyond this range, then you can reverse the top mounting bracket (i.e. turn the bracket so that the role of the pivot and sliding screws are swapped).

# Jungle Mounts Tree Pod

## Parts List

- Pre-assembled Jungle Mounts Tree Pod
- 2 x 2m Ratchet Straps
- 4mm Hex Key
- 3/16 inch Hex Key

## Before you Begin

No equipment should be mounted onto the Jungle Mounts Tree Pod before it has been secured in the intended position.

The easiest way to attach your Tree Pod to a tree is to first partially loosen the three long bolts that attach the legs to the central hub section. It should be possible to move the legs with some resistance, but they should not be so loose that they flop around freely.

## Attaching the Ratchet Straps

1. Position the Tree Pod on the ground next to the tree, with the feet pointing towards the trunk. Thread the end of the ratchet strap through one of the horizontal gripping feet on the Tree Pod. Ensure that the strap is not twisted and that the inner side of the ratchet itself is facing in towards the tree.
2. Continue to thread the end of the ratchet strap through the gripping foot on the other side.



3. Pass the end of the ratchet strap around the tree trunk and thread it through the bottom of the ratchet strap



4. Loop the strap back through the slot in the central axel.



5. Lift the tree pod into position with one hand and use your other hand to pull on the free end of the strap so that it grips gently around the tree. At this point, you can perform minor changes to the position of the Tree Pod so that both ridges of each gripping foot are in full contact with the tree trunk and that the camera head is level.



6. Pull the free end of the strap again by hand to tighten it.



7. Now you can tighten the strap with the ratchet mechanism. To do this, repeatedly lift and lower the handle on the strap. You will hear the ratchet mechanism working and you will see the strap pulling tighter around the trunk.



8. Once the steps 1-6 have been completed, you are ready to secure the vertical leg to the tree trunk. Follow the same procedure outlined in steps 2-6 on this single gripping foot.

9. Once the whole Tree Pod has been secured to the tree with the straps fully tightened by the ratchets, you can test the hold by pulling on the jungle mount legs. You can now fully tighten the bolts.

## Removing the Tree Pod

1. It is important to first dismount any equipment from the Tree Pod before removing it from the trunk.
2. Pull the spring-loaded black plastic tab backwards towards the handle of the ratchet. At the same time has holding the tab back, lift the handle and open it fully.



3. At this point the ratchet can be pulled away from the tree and the Tree Pod can be dismantled.



## Adjusting the Pan-Tilt Head

To adjust the position of the Pan-Tilt head, the 4 screws on the side should be loosened. Once the composition has been finalised, all four screws should be fully tightened again.



## Jungle Mounts Combo Kit

### Parts List

- Jungle Mounts Tripod
- 4mm Hex Key
- 3/16 inch Hex Key

A bag containing:

- 2 x 2m Ratchet Straps
- 1 x Pan-tilt head with 2 x ¼ inch button head screws
- 2 x Round foot plates
- 1 x Central Tree Pod hub plate
- 3 x Gripping feet
- 4 x ¾ inch button head
- 6 x ¼ inch button head screws (8 in total)

## Tripod to Tree Pod Conversion

Before you start, it is recommended that you use a bag or box to contain the components that you remove from the Tripod and which you do not re-use on the Tree Pod configuration.

### Disassembling the Tripod:

1. Remove the quick release clamp from the top mounting bracket of the tripod by unscrewing the two  $\frac{1}{4}$  inch cap head screws with the  $\frac{3}{16}$  inch hex key. Keep the quick release clamp one side, as you will need it later. Re-attach the cap head screws directly into the top mounting bracket to avoid losing them.



2. Remove the top mounting bracket from Tripod by unscrewing the two long bolts on the side. Place these two bolts, the friction plate and the top mounting bracket into your bag of Tripod parts.



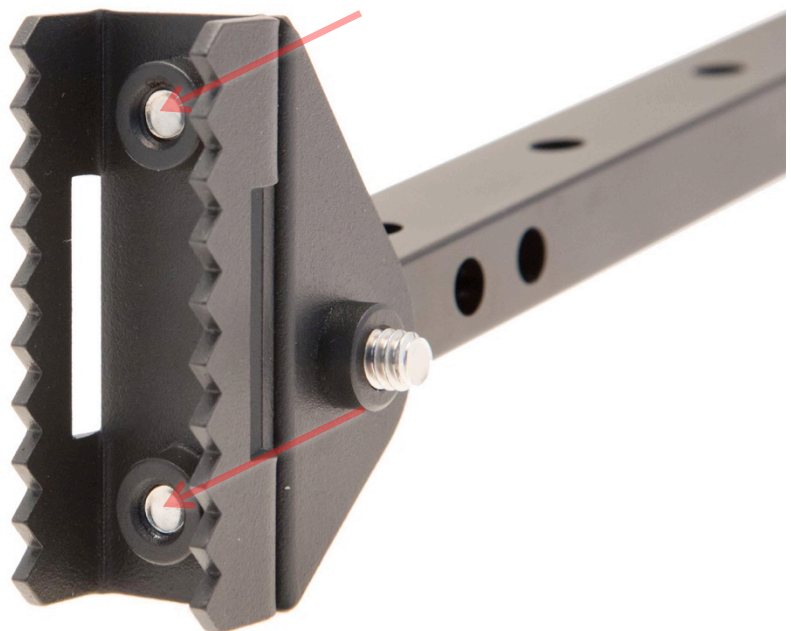
3. Disassembled the three legs from the central leg brackets by unscrewing all six bolts. Place five of these bolts, three brackets and three friction plates into your bag of Tripod parts. Keep one of these long 1.25 inch bolts aside as you will need it later.



4. Remove the two feet from the two shorter legs of the tripod. Put one of the feet into the bag of Tripod parts and keep one aside for later. Keep the two bolts aside as you will need them later.

### **Assembling the Tree Pod:**

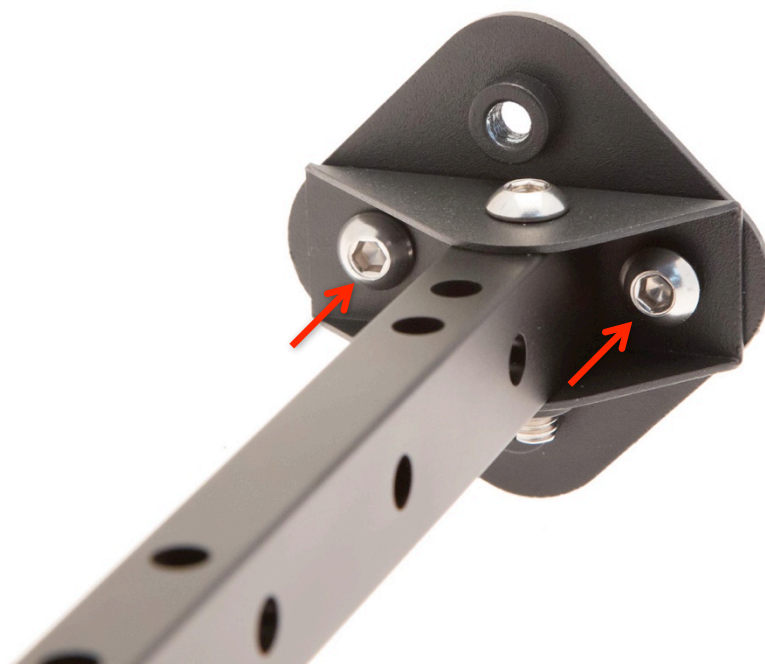
1. Attach a gripping foot to the bottom of the flat foot that is still attached to the longer leg using two ¼ inch button head screws



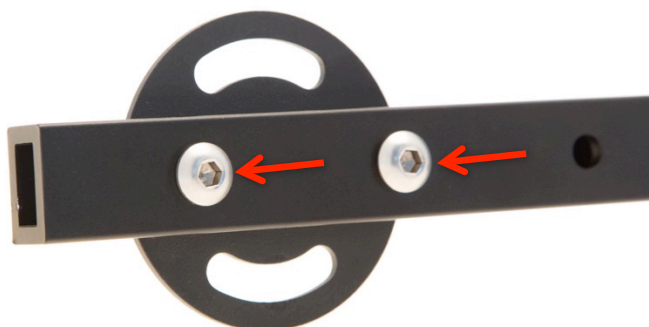
2. Attach the spare flat foot to the other end of the longer leg with one long 1.25 inch bolt, making sure that the orientation of the foot matches the image below.



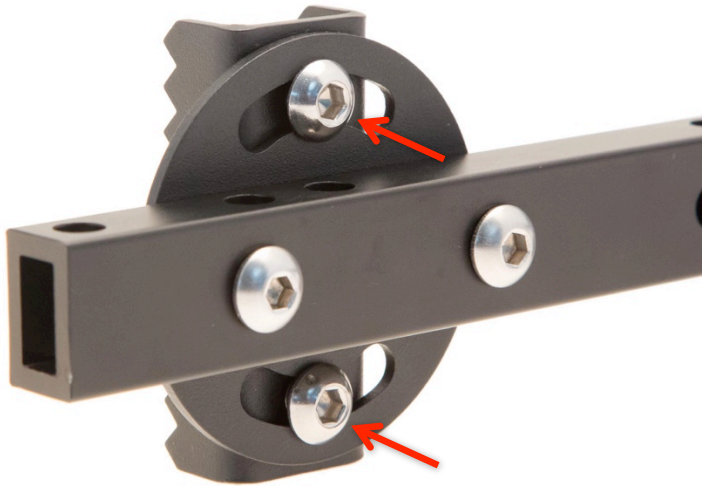
3. Attach the central hub plate to this foot using two small ¼ inch button head screws.



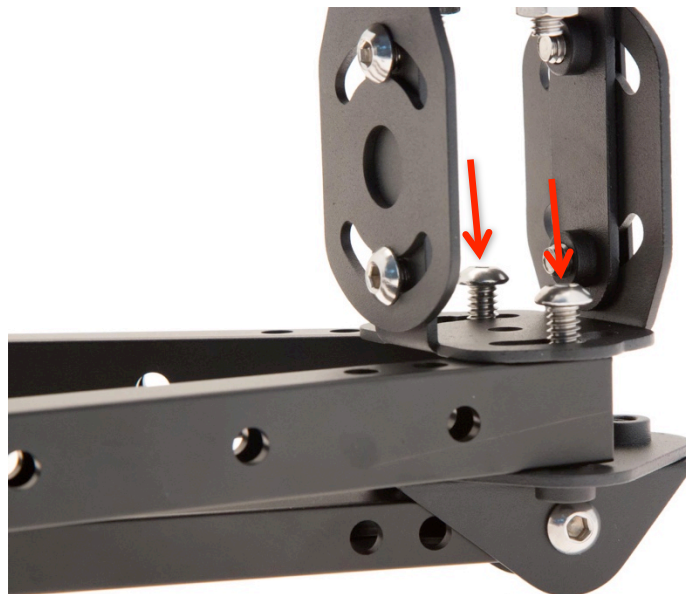
4. Attach the round foot plates to the ends of the two shorter legs, using four ¾ inch button head screws (two on each).



5. Attach the two remaining gripping feet to the round foot plates using four ¼ inch button head screws.

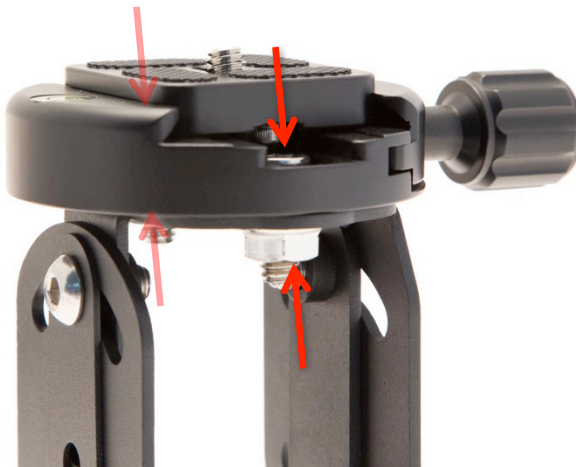


6. The next step is to attach the pan-tilt head onto the central tree hub plate, sandwiching the two shorter horizontal legs in between the pan-tilt head and the central tree hub plate. Insert two long 1.25 inch button head screws through the bottom of the pan-tilt head, through the last available hole on the short horizontal legs, and into the thread of the central tree hub plate.



7. Reattach the quick release clamp onto the top of the pan-tilt head, using the 3/16 inch hex key, the two ½ inch cap head screws, and the two nuts. The flat side of the nuts should be in contact with the tripod.





## Tree Pod to Tripod Conversion

Before you start, you will need to get the spare Tripod parts that you collected when you originally dismantled your Tripod configuration. Take the Tripod parts out of this container, and re-use this same bag or box to contain the components that you remove from the Tree Pod and which you do not re-use on the Tripod configuration.

### Disassembling the Tree Pod:

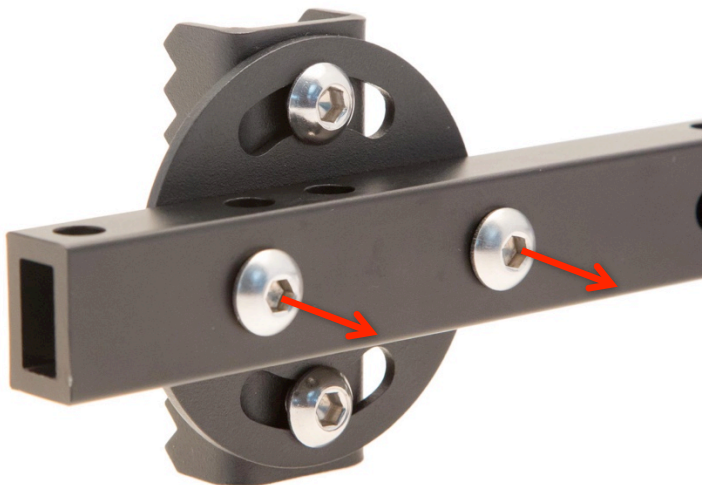
1. Remove the gripping foot from the bottom of the flat foot that is attached to the end of the vertical leg, using your 4mm hex key. Place the gripping foot and the two ¼ inch screws into your bag of Tree Pod parts.



2. Unscrew the other flat foot from the bottom of the central hub plate. Place the two ¼ inch button head screws into your bag of Tree Pod parts.

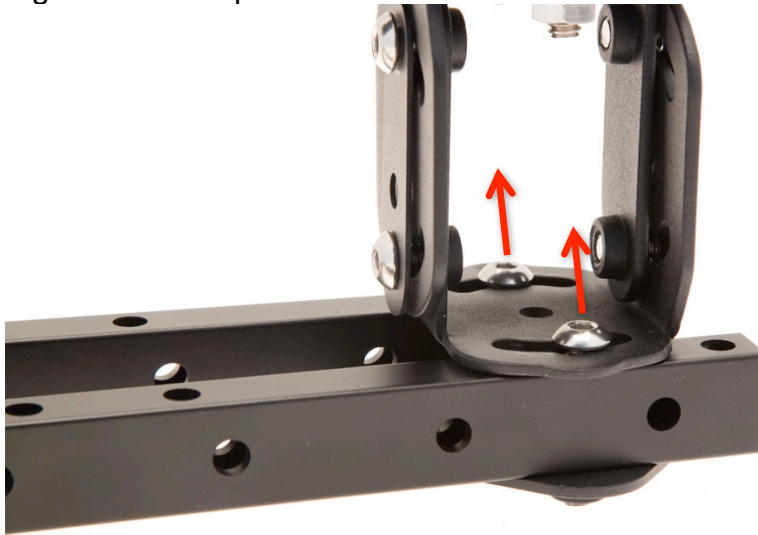


3. Also remove the flat foot itself from the end of the long leg. Keep the long 1.25 inch bolt and the flat foot aside as you will need them later.
4. From the horizontal legs, remove the two round foot plates (with the gripping feet still attached). Place the four ¾ inch button head screws and the two round foot plates (with the gripping feet still attached) into your bag of Tree Pod parts.



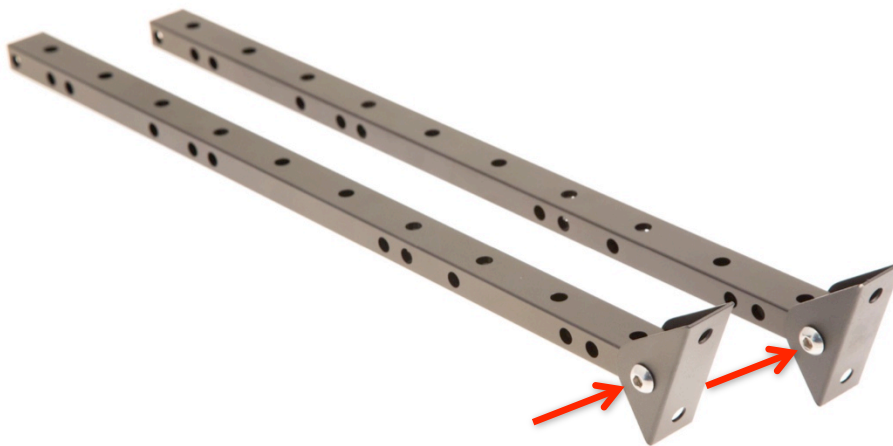
5. Remove the quick release clamp from the top of the pan-tilt head. Keep the quick release plate clamp aside as you will need it later. Re-attach the two cap head screws and the two nuts to the top of the pan-tilt head. The flat side of the nuts should be in contact with the tripod.

6. Remove the pan-tilt head and the horizontal legs from the central tree hub plate by unscrewing the two long 1.25 inch bolts. Place the central tree hub plate, the pan-tilt head and the two 1.25 inch bolts into your bag of Tree Pod parts.



#### **Assembling the Tripod:**

1. Attach a flat tripod foot to the ends of each of the legs, using two long 1.25 inch bolts.



2. Attach the three leg brackets and the three friction plates to the tripod legs using six long 1.25 inch bolts. The components can be pieced together according to the sequence below.



*1 – Attach pivot bracket and friction to a short leg, using 2x 1.25 inch bolts*



*2 – Attach second bracket and friction plate to the other short leg using 1.25 inch bolts. Attach to the bracket from step 1*



*3 – From the other side assembly should look like this*



*4 – Attach a bracket and friction plate to the long leg, making sure to use the correct holes*

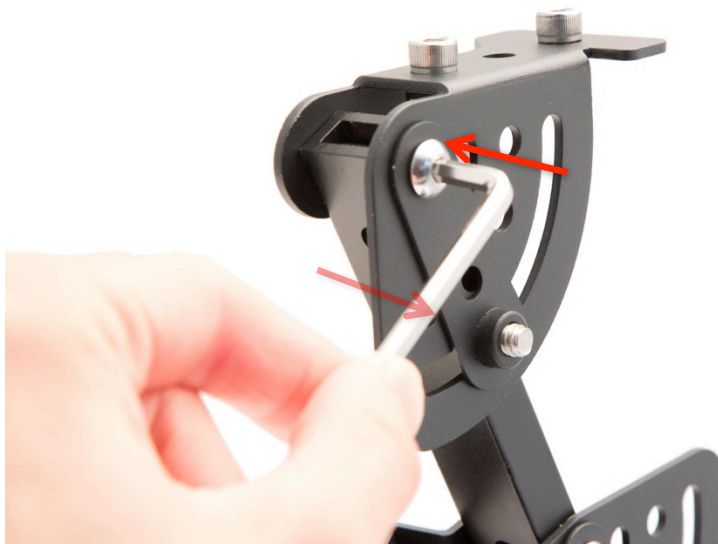


*5 – Attach the long leg from step 4 to the assembly from step 3*

3. You should ensure that the feet are oriented so that the longer exposed part of the foot is pointing outwards rather than inwards. The foot direction can be easily reversed if necessary.



4. Reattach the top mounting bracket and the friction plate to the top of the longest leg, using two long 1.25 inch bolts. The orientation should match the image below, but the direction of the top mounting bracket can be reversed if larger tilt angles are required.



5. Attach the quick release clamp to the top mounting bracket of the tripod using the two ¼ inch cap head screws. The 3/16 inch hex key is required for this step.



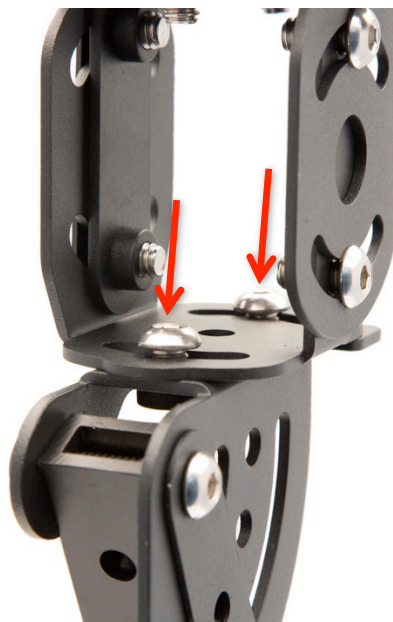
## Pan-Tilt Head

### Attaching the Pan-Tilt Head to a Jungle Mounts Tripod

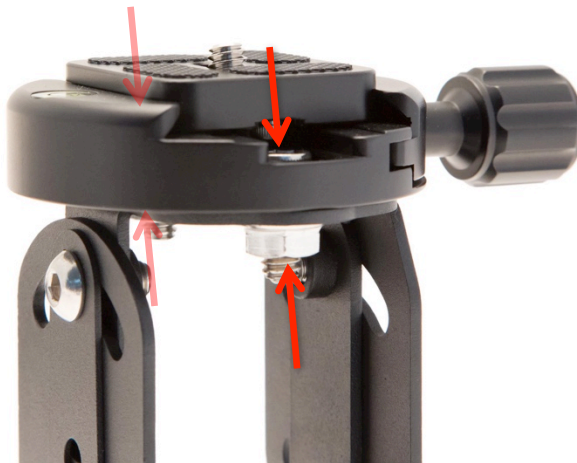
1. Remove the quick release clamp from the top mounting bracket of the Jungle Mounts Tripod by unscrewing the two ¼ inch cap head screws with the 3/16 inch hex key. Keep the quick release clamp one side, as you will need it later. Keep these ¼ inch cap head somewhere safe as you might need them at a later date.



2. Next, firmly attach the bottom of the Pan-Tilt Head to the top mounting bracket of the tripod, using the supplied two small ¼ inch button head screws.

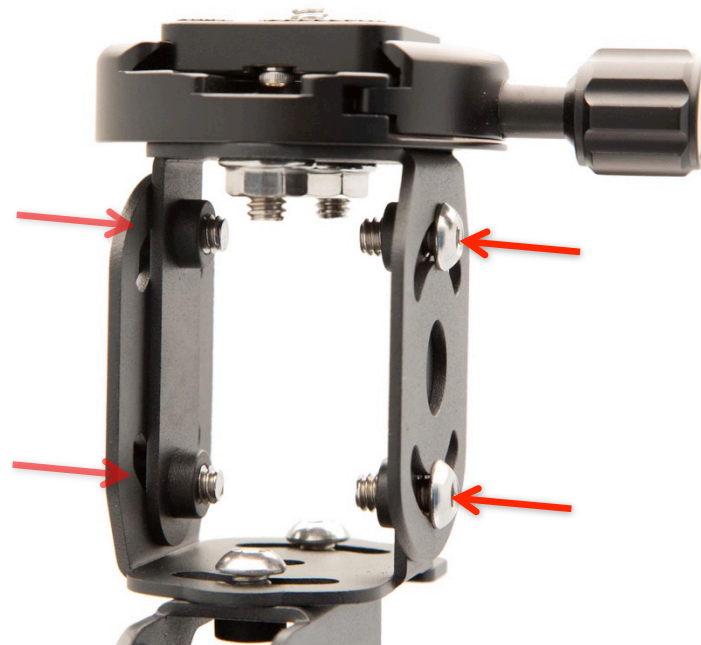


3. Attach the quick release clamp to the top of the pan-tilt head using the two longer ½ inch cap head screws and the two nuts. The flat side of the nuts should be in contact with the tripod.



## Adjusting the Position

To adjust the position of the Pan-Tilt head, the 4 screws on the side should be loosened. Once the composition has been finalised, all four screws should be fully tightened again.



## Arm-Extension

### Attaching the Arm Extension

The Arm Extension can be attached to any leg tube of a Jungle Mounts Tripod or Tree Pod using the two supplied  $\frac{3}{4}$  inch button head screws. The Arm Extension should not have any equipment mounted on it when it is being attached to a leg tube. An example attachment is shown below.



Once the Arm Extension has been firmly attached to the Jungle Mounts Tripod or Tree pod with all of the bolts fully tightened, then equipment can be mounted onto the opposite bracket using the supplied small  $\frac{1}{4}$  inch button head screw.

Different mounting angles can be achieved by reversing the direction of the mounting brackets.

## Leg Extension

Before attaching the Leg Extension tubes to your Jungle Mounts Tripod, please ensure that no equipment is mounted on the tripod. Then follow these assembly steps.

1. First, remove the three feet from the bottom of the tripod by unscrewing the long 1.25 inch bolts. You should use the 4mm hex key that came supplied with your Tripod.
2. Next, attach the three Leg Extension tubes to the tripod legs, using the six supplied nuts and bolts. The flat surface of the nuts should be in contact with the tripod. Care should be taken to attach the Leg Extension tubes in the correct holes. Please refer to the example image below.



3. Finally, reattach the tripod feet to the bottom of the Leg Extension tubes, using the long 1.25 inch bolts. The feet should be oriented so that the longer section points outwards.



## Support

For technical support, please email [support@camtraptions.com](mailto:support@camtraptions.com).

To share photographs and discuss camera trap techniques, please join our group on Facebook: <https://www.facebook.com/groups/camtraptions/>